

# INSTALLATION INSTRUCTIONS

1. Unplug power



2. Remove the 8 screws holding cover



3. Slide cover towards back and lift



4. Unplug all the JST connectors



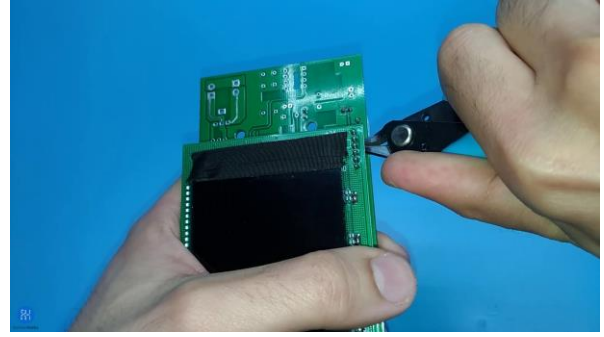
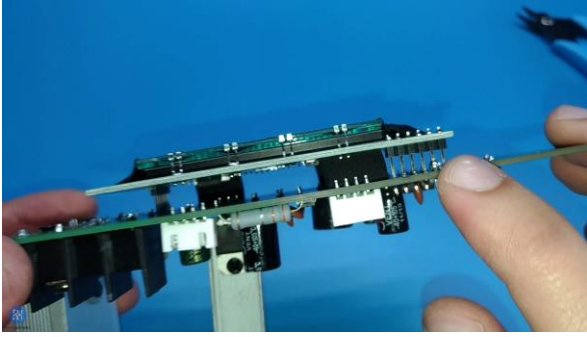
5. Remove AC wires



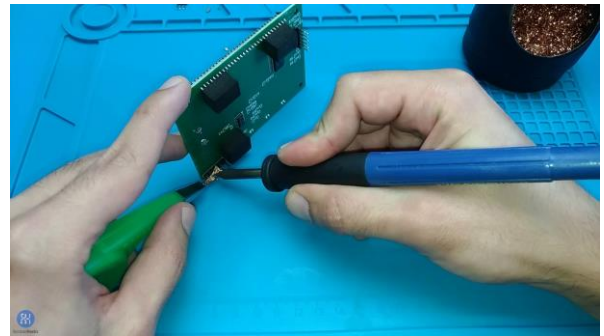
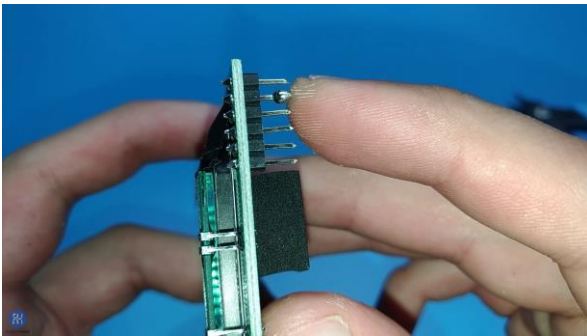
6. Remove 4 screws and remove the board



7. Cut display pin headers flush to the main board



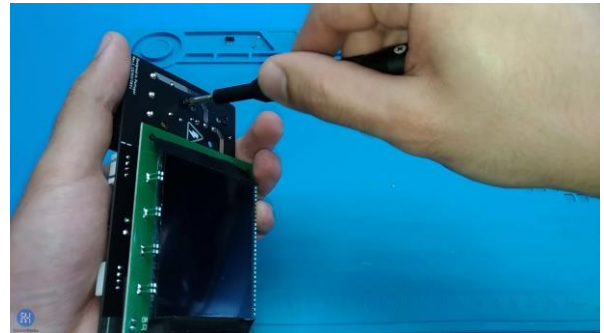
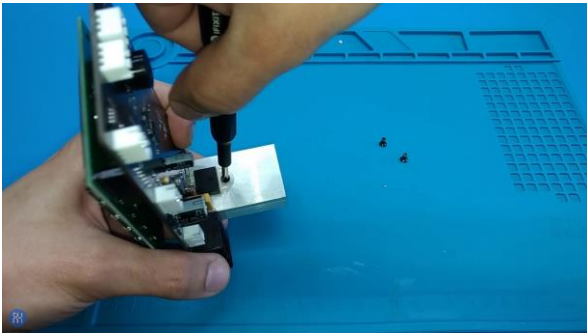
8. Remove any solder blobs with a soldering iron and solder wick



9. Remove heatsink from original board by unscrewing the 3 screws



10. Install heatsink on the new board (optional: add thermal paste)



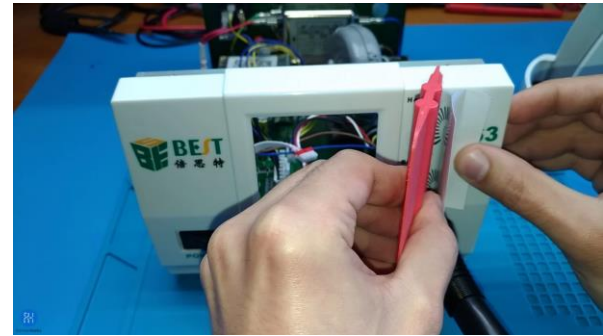
11. Clean surface with IPA



12. Align sticker to raised edge



13. Slowly peel backing paper while sliding a squeegee on the sticker



14. Create dimple in the center of the Xs



15. Drill pilot holes with small drill bit



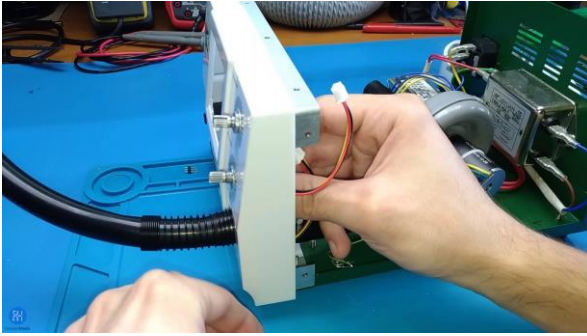
16. Drill final holes with 7mm drill bit



17. Use deburring tool or file to clean



## 18. Install potentiometers



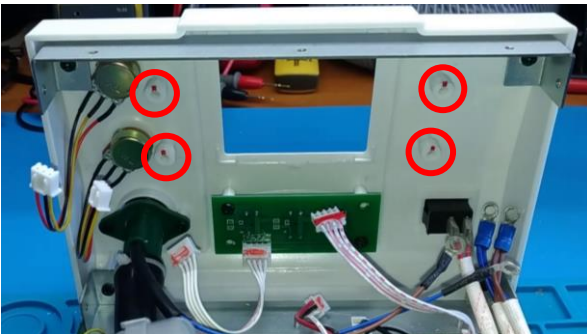
## 19. Install knobs



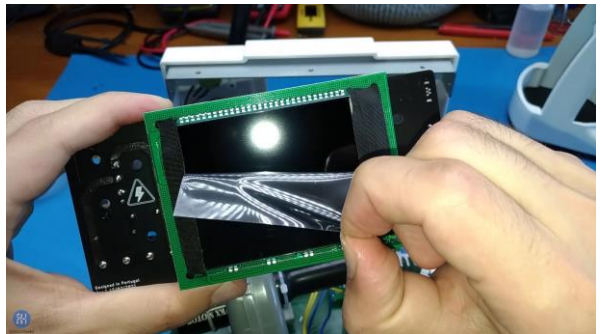
(back view)



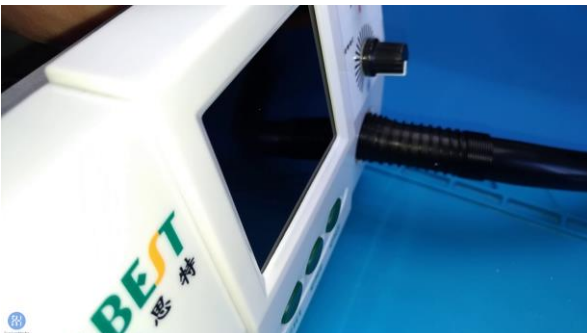
## 20. Install spacers, red line pointing up



## 21. Remove protective film (optional)



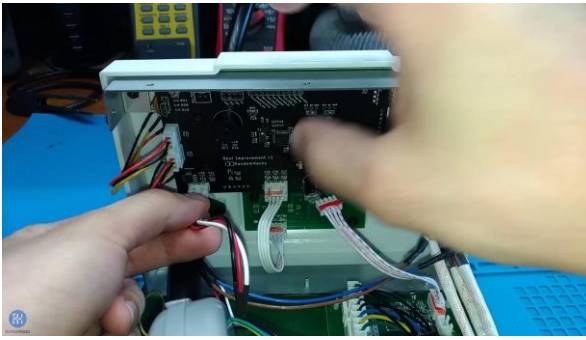
## 22. Hold the board in place, make sure the display is well positioned



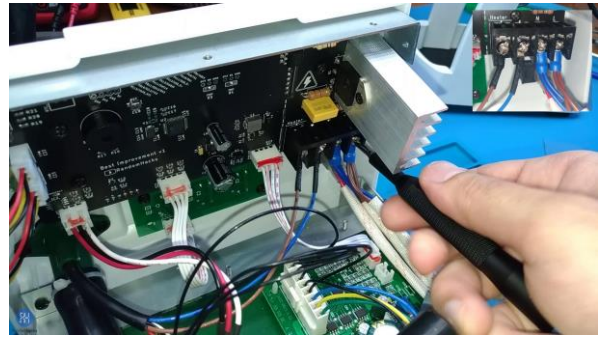
## 23. Tighten the 4 screws to secure the board



24. Reconnect all the JST plugs



25. Reconnect AC wires



26. Put the cover on and retighten the 8 screws



27. Test and enjoy!

